

# English Partnerships

## Management Information Portal

### Background

English Partnerships is the national regeneration agency, helping the Government to support high quality sustainable growth in England. The agency reports to the Department for Communities and Local Government (DCLG.)

English Partnerships has more than 500 employees operating from 14 offices across the country. It has a portfolio of strategic sites covering over 6,000 hectares and manages around 2,000 regeneration projects at any given time. The portal is linked to a data warehouse containing key regeneration metrics. These include number of housing starts, number of housing completions, employment floorspace created and hectares of Brownfield land reclaimed.



"It would be difficult to imagine a better supplier/customer relationship than that which has developed between Chapter26 and English Partnerships."

*David Wilson Applications Manager,  
English Partnerships*

### Business Requirements

In choosing BEA Aqualogic portal technology, English Partnerships primary focus was on the improved management of its regeneration projects. However, following successful first and second phase deployments, the English Partnerships Executive Management Board gave the go-ahead to replace the whole of its existing Domino intranet with BEA Aqualogic. This was successfully delivered in January 2006. As a project-based organisation, with employees and projects across the length and breadth of the country, English Partnership needs an environment that provides tailored information and services regardless of office location. The portal, named 'intrepid 2006', enables employees to communicate with each other, log and retrieve information, as well as access applications, using web technology. The integration capability of the portal framework enables interlinks and federation of applications such as mapping, project control and the employee directory into 'composite applications', to provide a cohesive and information-rich overview of the organisation to specific user communities.

The portal provides project managers with a useful forum to plan, execute and review project performance. Employees share and retrieve information as well as work collaboratively. Senior managers can gauge the organisation's performance via a dashboard, as well as gain insight into the progression of individual projects through a traffic light status reporting system.

#### *Business criteria overview for the Intranet:*

- Build upon the existing (non-Portal) Intranet
- Surface core business data to aid management decision making
- Establish a linkage between business plans and individual projects
- Flexible to match business structure changes
- Visually compelling for staff to visit

### The Project Approach

Through years of experience Chapter26 has developed a number of 'best practice' approaches for Portal design and implementation. In addition to these 'best practices' Chapter26 has developed a proven methodology for portal deployment (CPM). CPM ensures that all the necessary steps, checks and balances are used in order to ensure rapid and successful portal implementation. To accommodate English Partnerships style a 'RAD' approach was adopted. The first-phase project was successfully delivered within 56 days and demonstrated to the BEA user group on the afternoon of the project 'Go live'.

### The Solution Overview

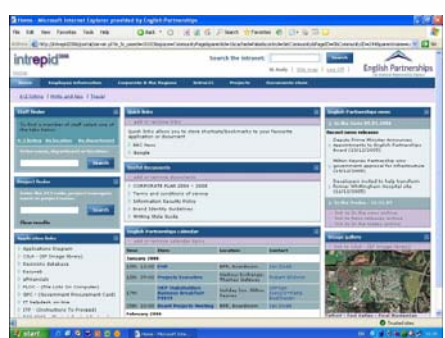
Technical Deliverables for Intranet:

- BEA AquaLogic User Interaction Portal
- 3 Server .Net deployment plus Oracle database space
- Custom User Interface
- Integration between Project Control System via Data Warehouse and geographical data from GIS system
- Reporting web service
- Maps, Team Introductions & Project Summaries delivered with BEA ALUI Publisher

Intranet Deployment Details:

- Initial 56 Man-day deployment using Chapter26 consultants
- Training and knowledge transfer provided to hardware support, software support and application development teams
- The Internal Application Development team now authoring their own web services and communities

### 'intrepid 2006' – Intranet

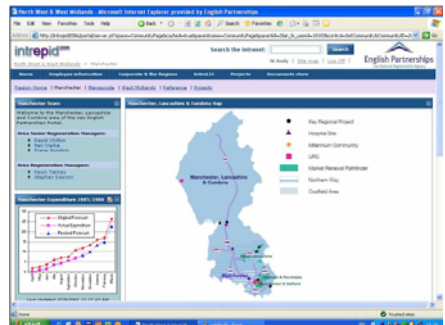


### Summary

"It would be difficult to imagine a better supplier/customer relationship than that which has developed between Chapter26 and English Partnerships over the last 6 or 7 months.

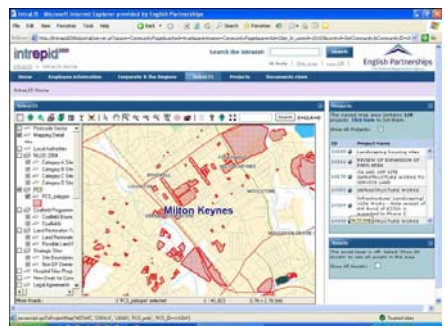
A good supplier/customer relationship has 3 essential ingredients:

1. a shared vision
2. on-time/on-budget delivery against that shared vision
3. a flexible and responsive way of doing business



Chapter26 gives us all of those things and then adds an extra dimension - the talent, drive and determination possessed by the Chapter26 team.

In my experience over 25 years as a consumer of IT services this combination of supplier attributes is rare. Harnessing those attributes generates the potential for amazing results. We are beginning to get those amazing results and in due course will transform the way we share information within English Partnerships.



Initial response to the portal has been overwhelmingly positive. People from all departments and levels within the organisation have praised the usability and functionality of the system. The applications that we have integrated using the portal have rendered huge synergies, and we now plan to integrate more."

*David Wilson English Partnerships*

### About Chapter26

Chapter26 is a Specialist Solutions Provider which design, implement & integrate collaborative business environments through the secure management of content. Chapter26 is BEA Value Added Reseller, EMC Documentum Select Service Team, Microsoft, VMWare, Kofax & Sealed Media Partner.



Mobility Solutions  
Information Worker Solutions



VALUE ADDED  
RESELLER

